

FEATURES

INTERIOR

Master Bedroom on Second Floor with Private Porch
Master Bathroom Includes Separate Tub and Walk-In Shower
Large Walk-In Closet
Laundry Room on Second Floor
Hardwood and Tile Floors
Granite Countertops in Kitchen and Master Bath
Vented Gas Fireplace
10' Ceilings Down, 9' Ceilings Up
Andersen® Windows
Kohler® Fixtures
GE® Appliances

EXTERIOR

Hardiplank® Siding
Metal Roof
Large Double Front Porch with Metal Roof
Beautiful Landscaping with Irrigation System
Picket Fence Front and Rear

COMMUNITY AMENITIES

Located on One-Mile Stretch of the Beautiful Savannah River
Greenway Walking and Biking Trails
Pedestrian Friendly
Public Parks and Gathering Spaces
Public Boat Dock
Architecture Reflective of Traditional Central Savannah River Area Architecture
Proposed Shopping and Dining Establishments
Proposed Neighborhood Pool
Adjacent to the River Golf Club
Close Proximity to Medical Facilities



89 CRYSTAL LAKE DRIVE, NORTH AUGUSTA, SC 29841
803.613.1641 WWW.HAMMONDSFERRY.COM



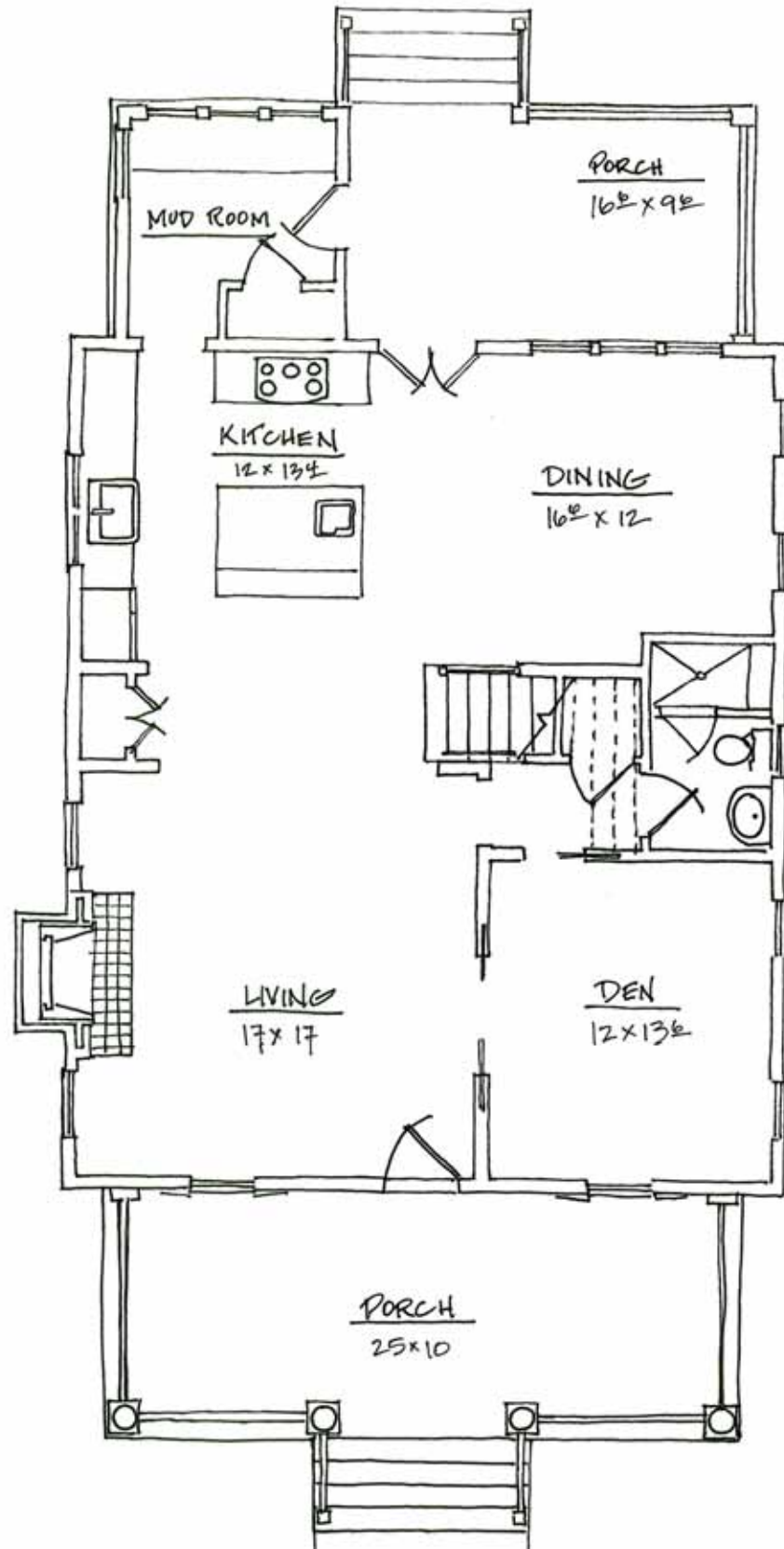
513 RAILROAD AVENUE
BLOCK 10 LOT 20

*3 bedroom, 2 ½ bath Classic Revival home
2,255 square feet*

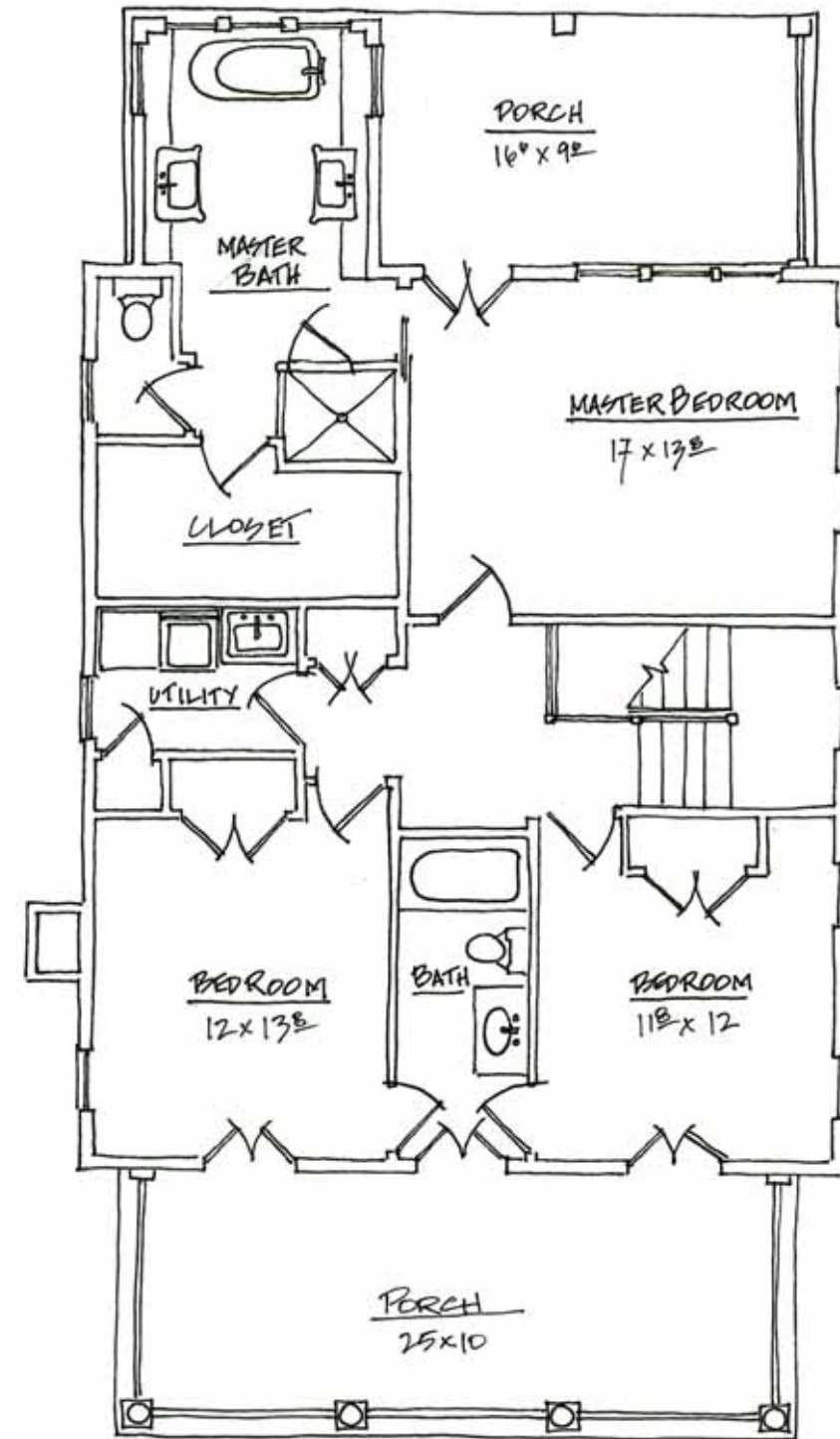
PRESENTED BY
Ken Daniel Construction, Inc.

ARCHITECT
Moser Design Group, Inc.





First Floor



Second Floor

